

Mounting instructions for type 011103 shaft seals for BUUS SM type Iceflakers. Document: 011103-uk-SM.pdf

Measures by 20°C / 68°F.

Introduction.

The shaft seals type 011103 substitutes types 011296 and 011299. Since the length of type 011103 is slightly smaller than on the former types intermediate layers must be used when installing the shaft seals. This service document describes the procedure on SM machines only.



Picture 1 – 011296

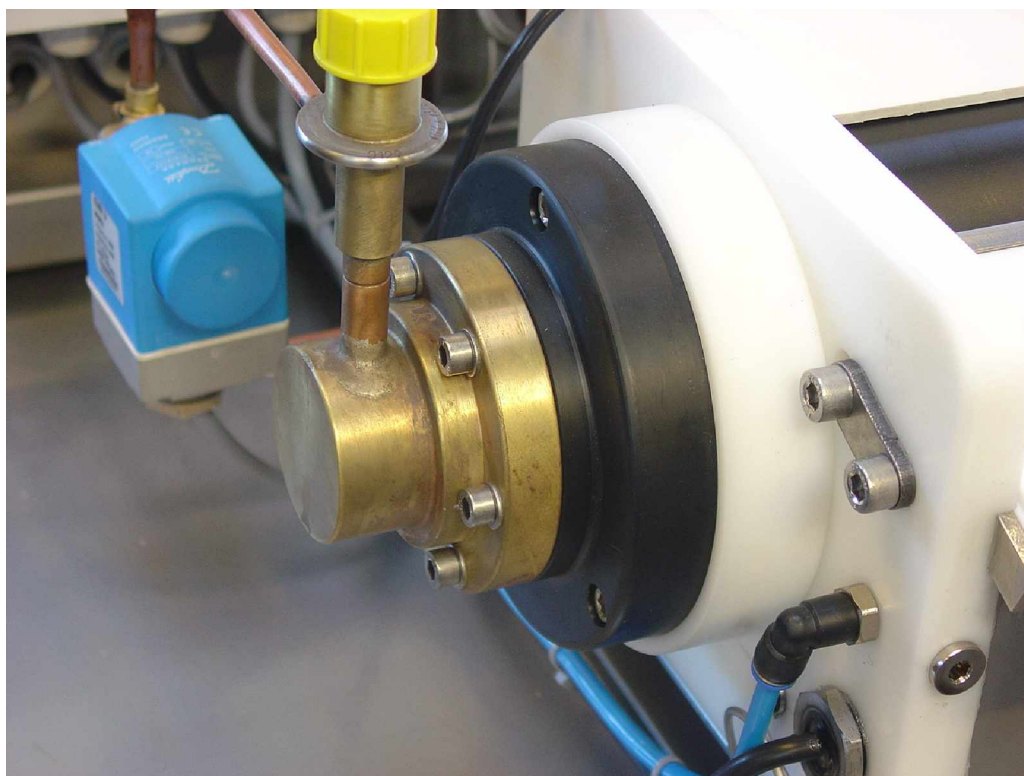


Picture 2 - 011199

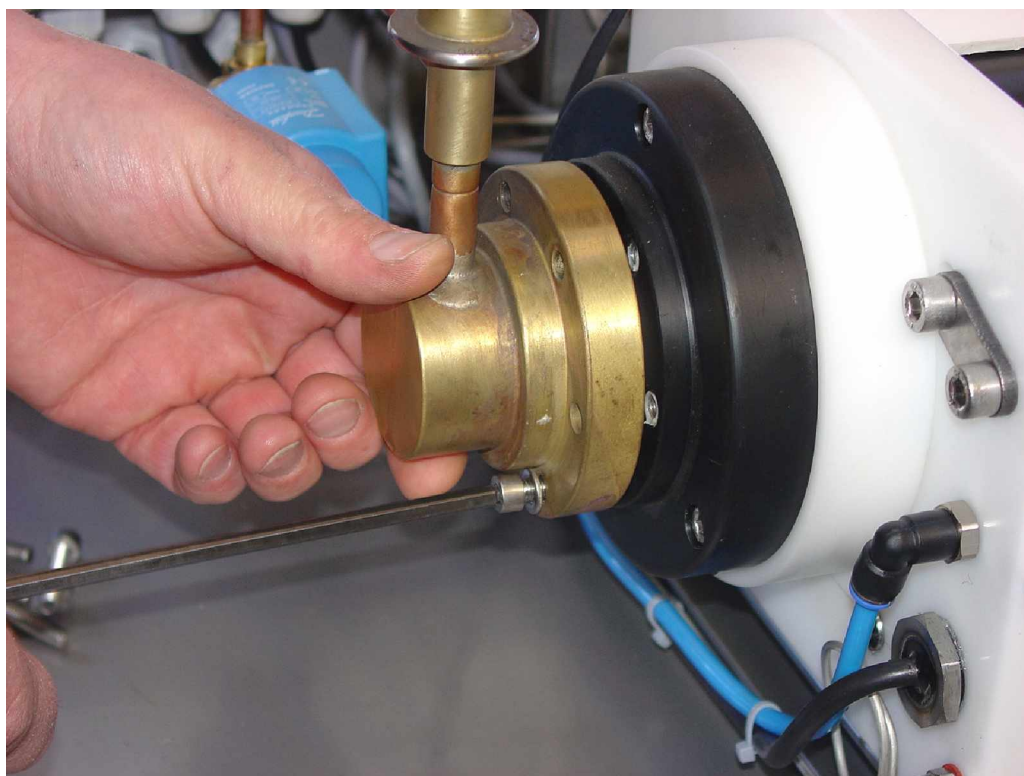


Picture 3 - 011103

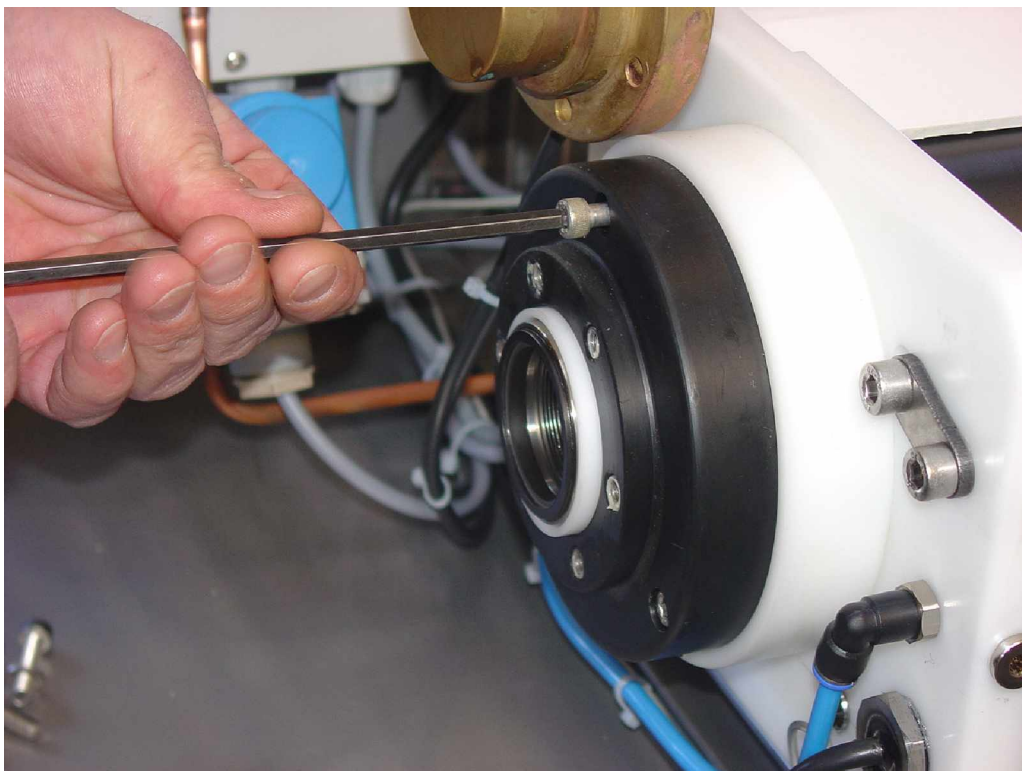
10-06-2005 14:50



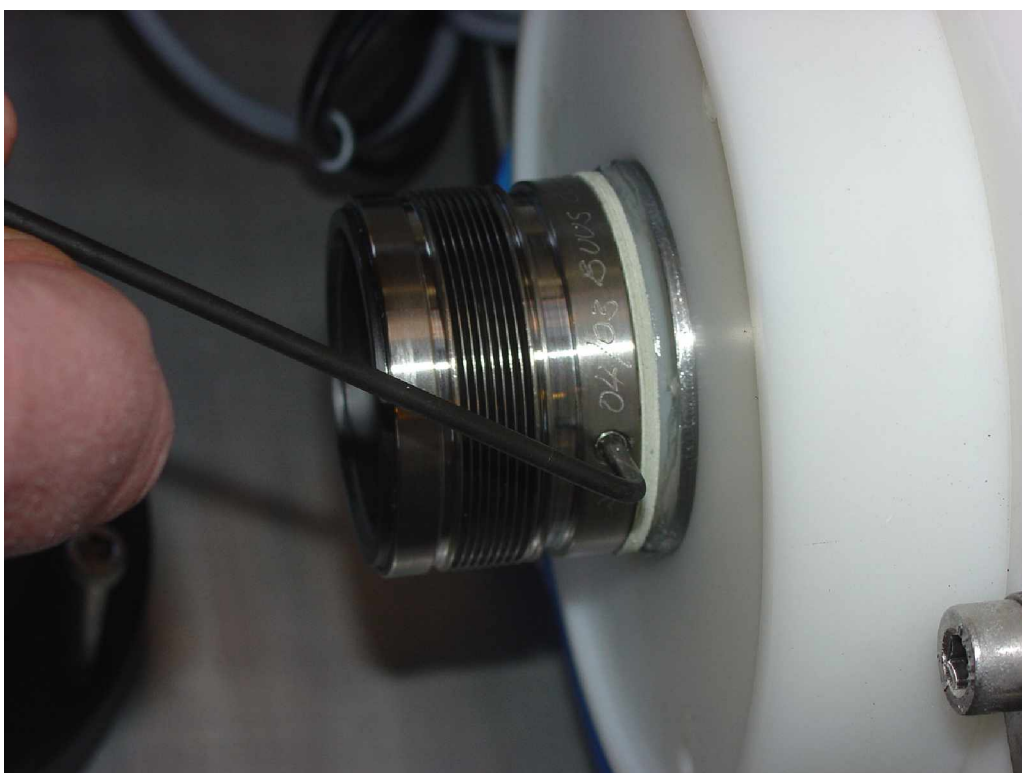
Picture 4



Picture 5 - dismount the brass flange



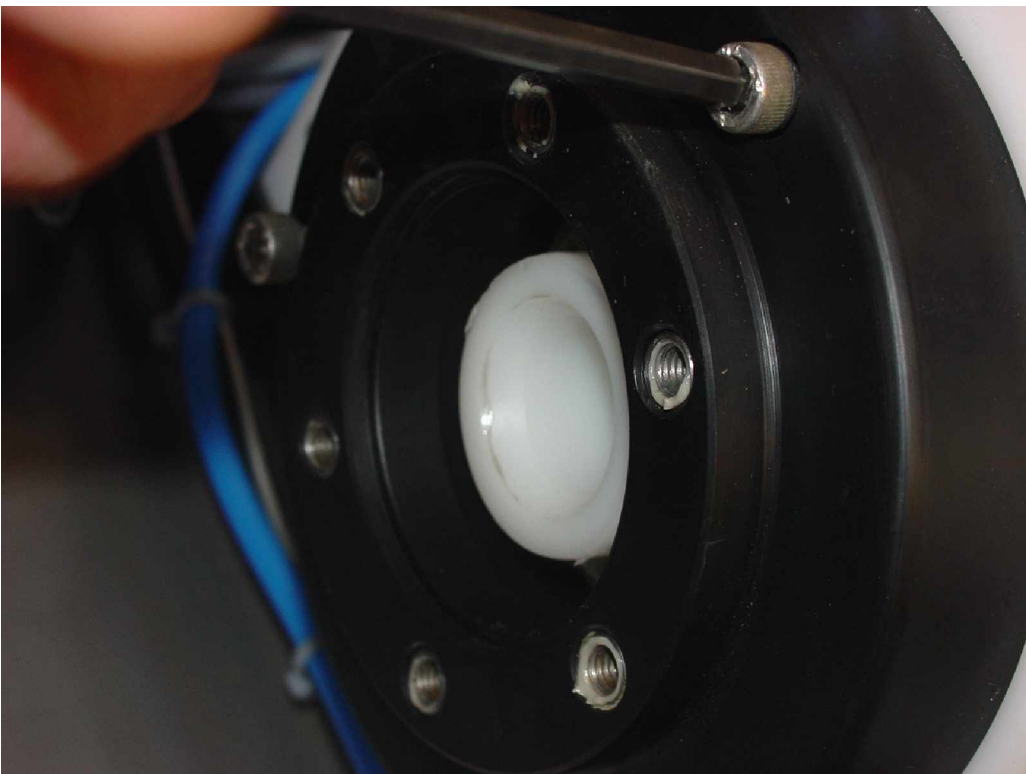
Picture 6 - dismount the black housing



Picture 7 - dismount the old shaft seal



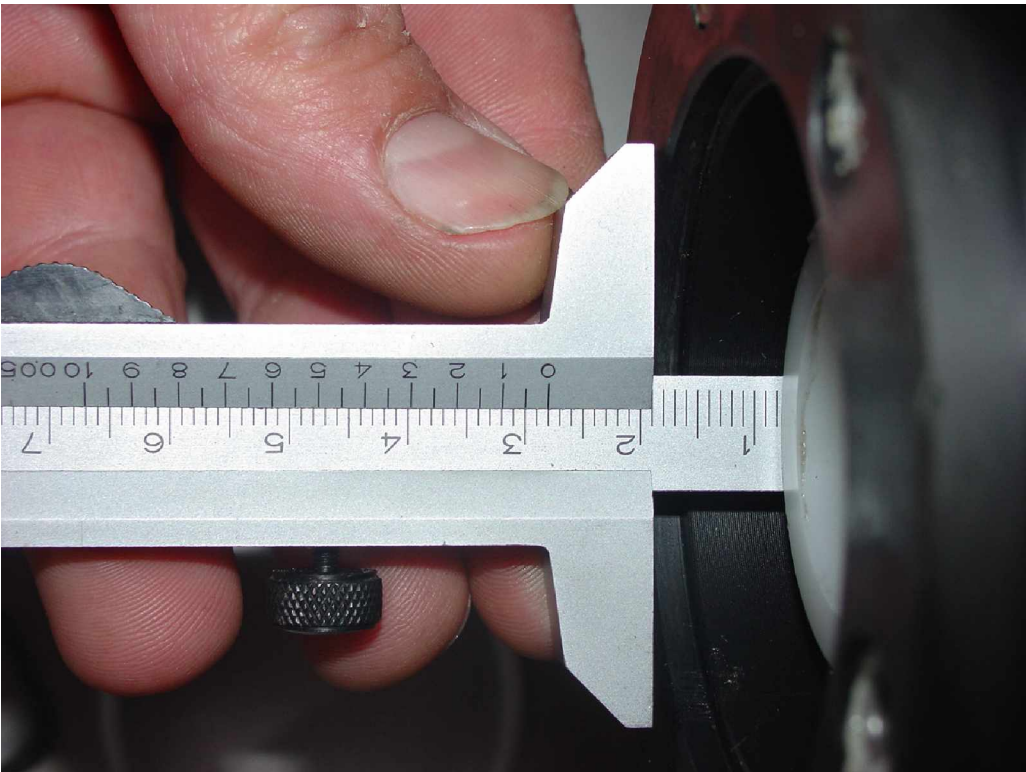
Picture 8 - the rod with the existing intermediate layers. Take off the existing layers.



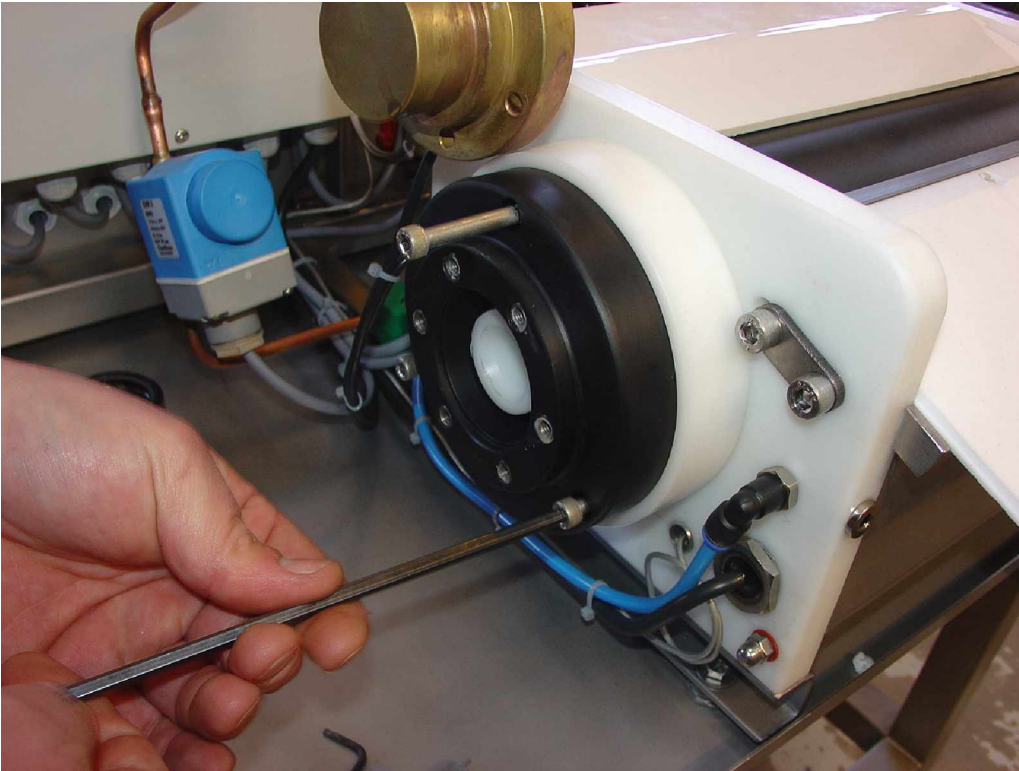
Picture 9 - mount the black housing again



Picture 10 - measure the distance to the shoulder. (With no layers mounted)



Picture 11 - here the distance is 28 mm. Make a note of the distance.



Picture 12 - dismount the black housing.

Choose the appropriate layers

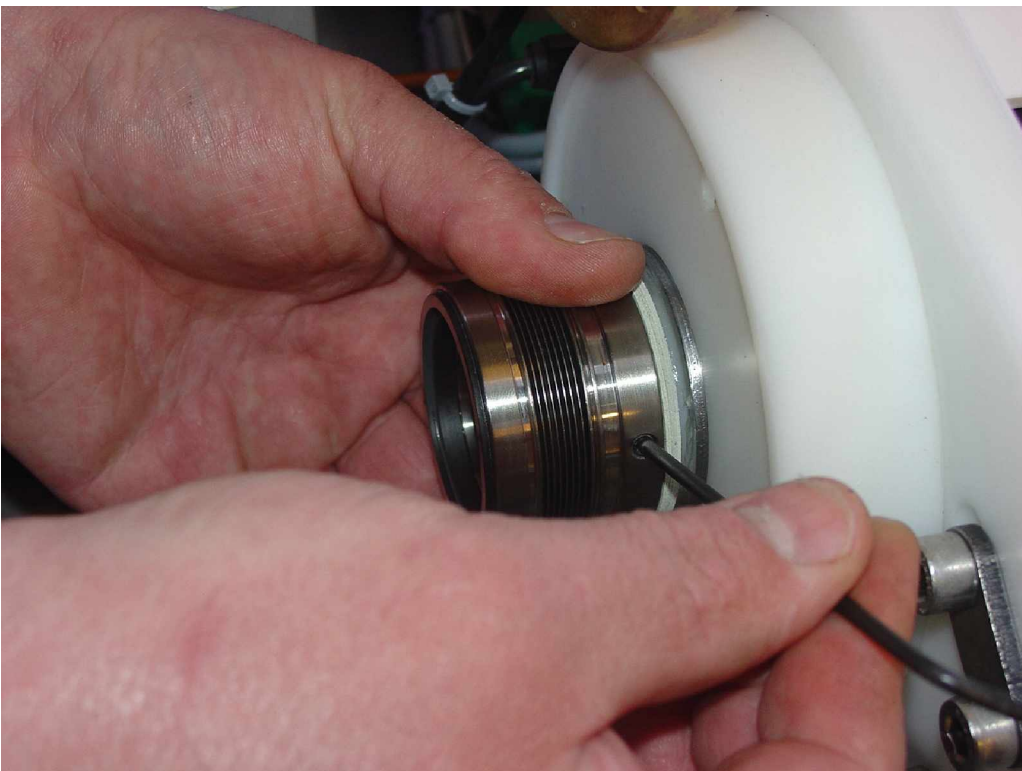
($\text{Ø}90 \times 59 \times 1.0$ and $\text{Ø}90 \times 58 \times 075$ are used only when the distance from the black housing to the shoulder is too narrow.)

Measured	Intermediate layers	Stock code
26,76 – 27,25mm.	1 stk $\text{Ø}90 \times 1,0\text{mm}$	$\text{Ø}90 \times 59 \times 1.0$
27,26 – 27,75mm.	1 stk $\text{Ø}90 \times 0,5\text{mm}$	$\text{Ø}90 \times 58 \times 075$
27,76 – 28,25mm.	none	
28,26 – 28,75mm.	1 stk $\text{Ø}53 \times 0,5\text{mm}$	1027128
28,26 – 28,75mm.	2 stk $\text{Ø}53 \times 0,5\text{mm}$	1027128
28,76 – 29,25mm.	3 stk $\text{Ø}53 \times 0,5\text{mm}$	1027128
29,26 – 29,75mm.	4 stk $\text{Ø}53 \times 0,5\text{mm}$	1027128
29,76 – 30,25mm.	5 stk $\text{Ø}53 \times 0,5\text{mm}$	1027128
30,26 – 30,75mm.	6 stk $\text{Ø}53 \times 0,5\text{mm}$	1027128

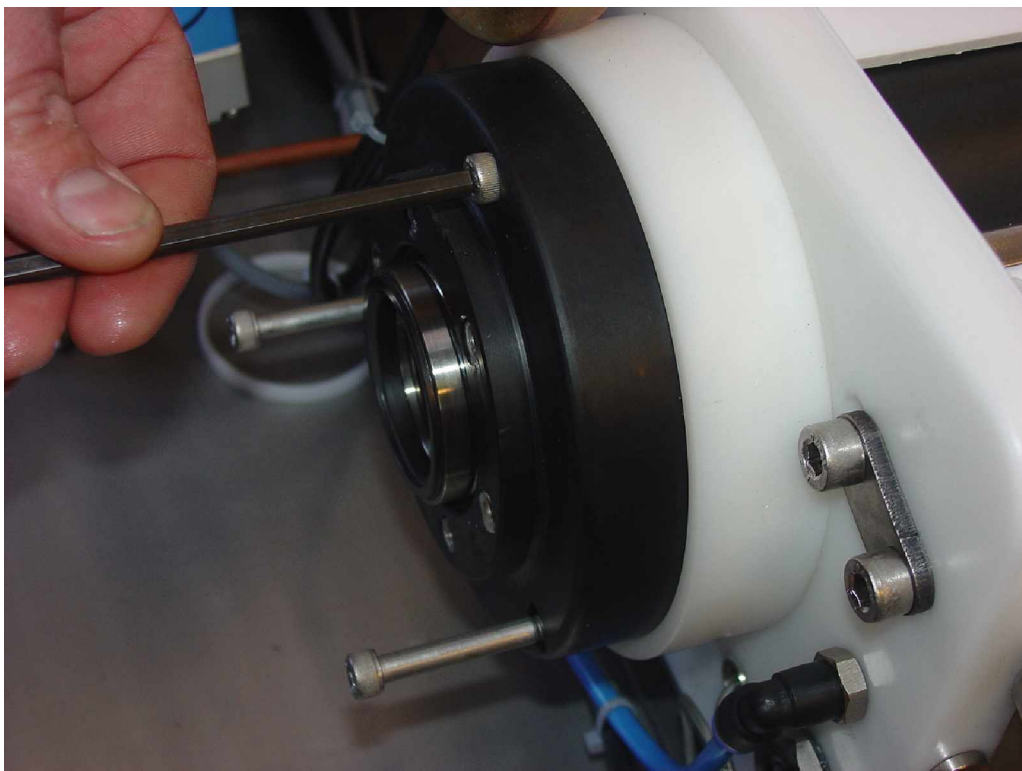
Always use the 5,8 mm stop ring. stock code 1300321202



Picture 13 – mount the layer(s)



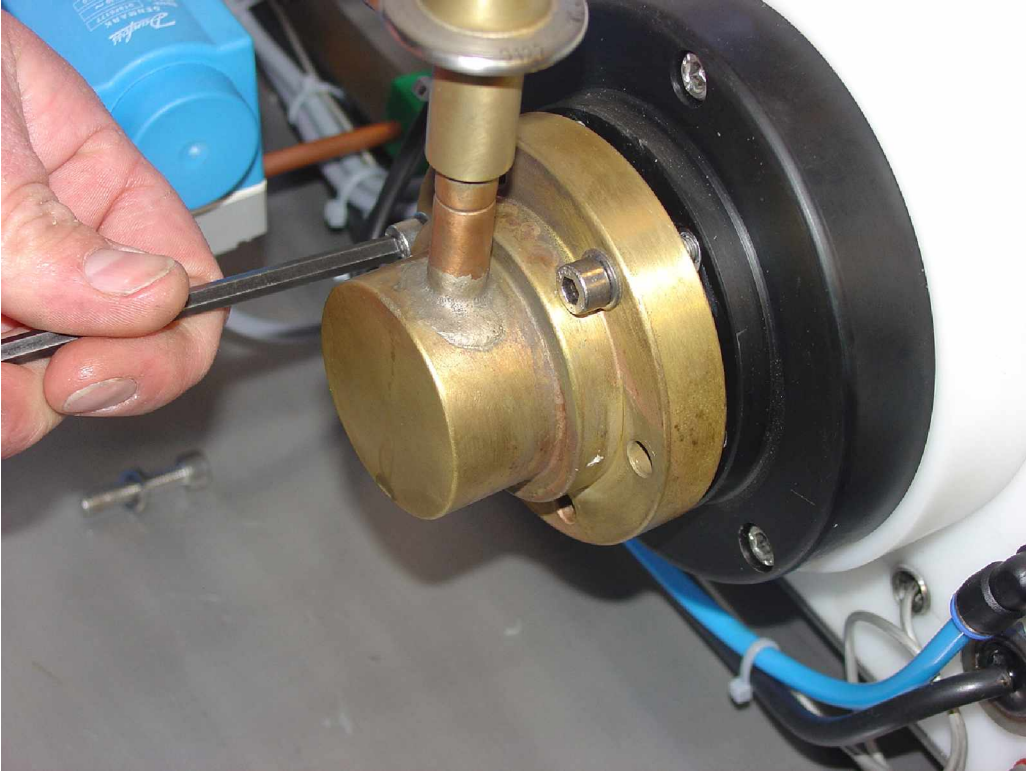
Picture 14 – mount the shaft seal. Use acetone to remove any oil or grease from both the rotating- and stationary part.



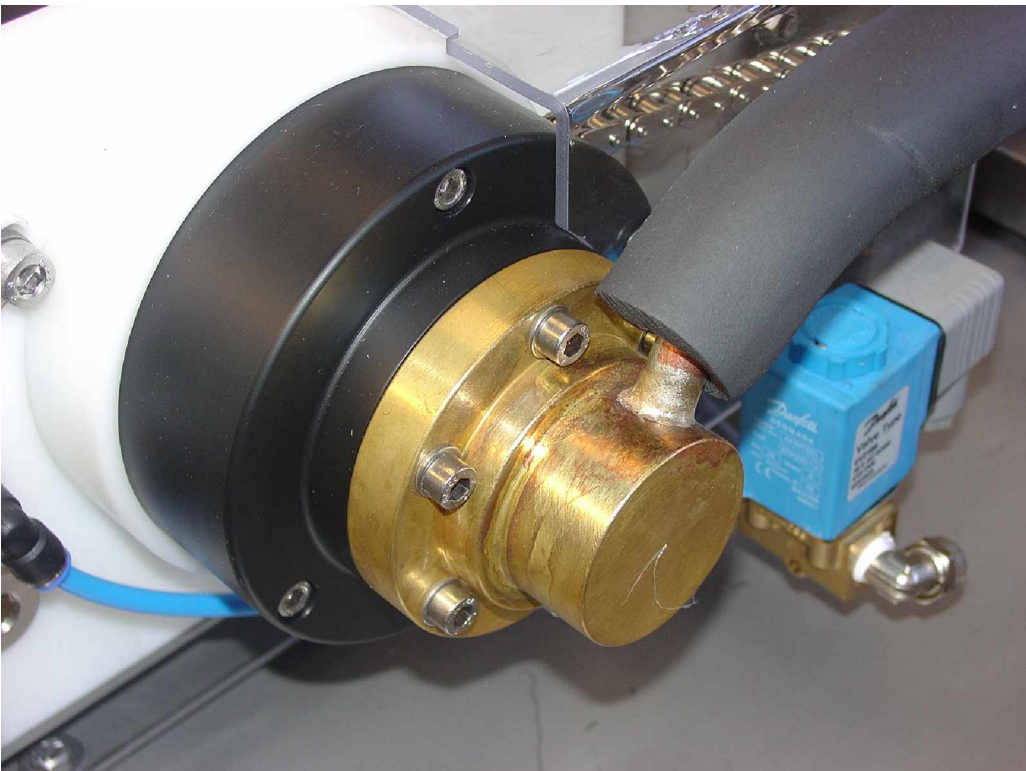
Picture 15 - mount the black housing



Picture 16 - mount the stop ring



Picture 17 - mount the brass flange



Picture 18 - repeat for the right side of the iceflaker