

Mounting adapters on older BUUS iceflakers.

Introduction:

In the years 1986 to 1995 the shaft seals used in BUUS iceflakers were the type 129572



Shaft seal type 129572.

(In sparepart lists they may be named 129572-1 and 129572-2)

In some cases you may want to change the type of shaft seals from 129572 to 011103.



Shaft seal type 011103

Shaft seals type 011103 protects better against leaks of refrigerant.

If you decide to change shaft seal type it is strongly recommended that you dismount the iceflaker and arrange with BUUS Refrigeration for a repair at our workshop. We cannot offer any guarantee if the repair is done by you.

Please notice that we cannot offer extended support for the repair except what you will find in this letter!

If this is not possible and you wish to make the repair you can follow the description in this letter and follow the instructions on drawing no 129572-to-011103\100.dwg

- 1: Dismount both shaft seals type 129572 according to the instruction in the manual.

- 2: Gently push the drum from side to side in the water chamber. Check that the drum cannot move more than 1 mm. from side to side. If the distance is more than 1 mm. you must fix this first. Otherwise the new seals will not be able to hold the refrigerant.

- 3: Place the drum so that there is 0,5 mm space between the drum and the gable at each end.

- 4: Measure the distance from the bearing to the stainless steel rod. Make a note of it for both ends of the iceflaker.

- 5: Calculate how much you will need to cut of the rods so that the distance from the bearing to the rod is $41 \pm 0,5$ mm. Again; you will need to calculate this your self.

(This is not shown on the drawing since there were different types of mounting the shaft seals in the period 1986 to 1995.)

- 6: Mount the drum in a lathe a cut of the rod where you calculated.

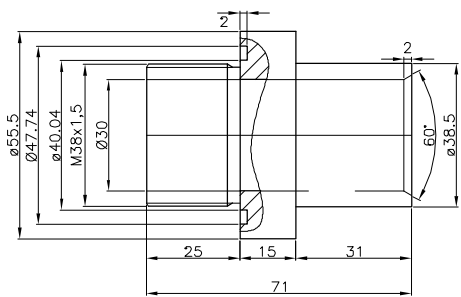
- 7: Drill a $\varnothing 36,5$ mm / 40 mm. deep hole in the rod end.

- 8: Use the taper tap and make a M38x1,5 mm x 30 mm thread.

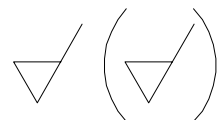
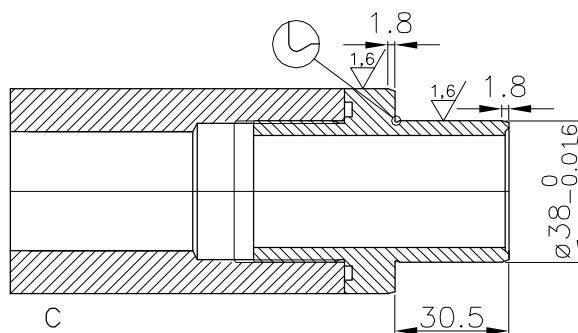
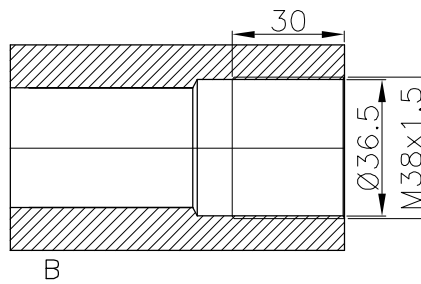
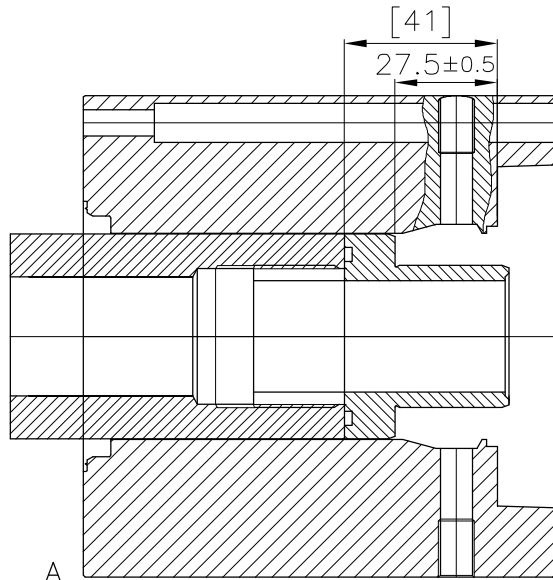
- 9: Mount the adapter. Remember to use O-ring and Loctite 577 glue!

- 10: Adapt to the measures shown on drawing 'C'. Remember that is must be concentric! Otherwise the shaft seals will leak!

- 11: Assemble the iceflaker and use the instruction in service letter 011103-uk.pdf to mount the shaft seals type 011103 correctly.



Adapter type BUUS 1300953593
AISI 304



This drawing belongs to Buus Køleteknik A/S. Do not make copies of it.

No: 1		Material:		Scale 1:1		Measures without tolerance by DS/EN 22768-1&-2	
Chamfer: 0.5x45°		BUUS KØLETEKNIK A/S REFRIGERATION Elsøvej 219 Frøslev DK-7900 Nykøbing Mors DENMARK Tlf. +45 97744033 Fax. +45 97744037		Type:		Surface coating / hardening	
Stock code:				Model:		Construction eng. Date:	
Correction	Date/sign:			Part of:		pm 020404	
A				Part of:			
B				Drawing no.:			
C		Material: Mounting of adapters for 129572 to 011103 shaft seals		129572-to-011103		1 ○ ○	

Description:	Quantity	Unit of Measure	Unit Price
You need for repair :			
SHAFTSEAL, COMPLETE	2	PC.	5.250,66
FLANGE INLET	1	PC.	532,51
FLANGE OUTLET	1	PC.	484,87
STAINLESS ADAPTOR FOR SHAFTSEAL	2	PC.	480,00
O-RING CR 40,94 X 2,62	2	PC.	27,05
LOCTITE 577 Glue 50ml.	1	FL	300,25
We also recommend :			
ENDCOVER, POM	2	PC.	684,00
PET DISK 15X117 MM	2	PC.	300,00
FLANGE PEHD FOR NH3	2	PC.	380,00
BUSH AT THE BIG GEAR WHEEL	1	PC.	248,23
O-RING 55X3	6	PC.	3,28
O-RING 107,54X3,53mm.	2	PC.	14,68
O-RING 247,33X2,62mm. NBR70	2	PC.	59,23
O-RING 63,0 X 3,0mm. NBR 70	2	PC.	3,46
SEALING RING, 65-85-10mm.	5	PC.	65,85
GEAR WHEEL PA6 SA 89/2,5	1	PC.	1.041,07
BEARING FOR OUTLET/INLET POM	2	PC.	1.231,62
Taper Tap M38x1,5mm.	1	PC.	1.240,00