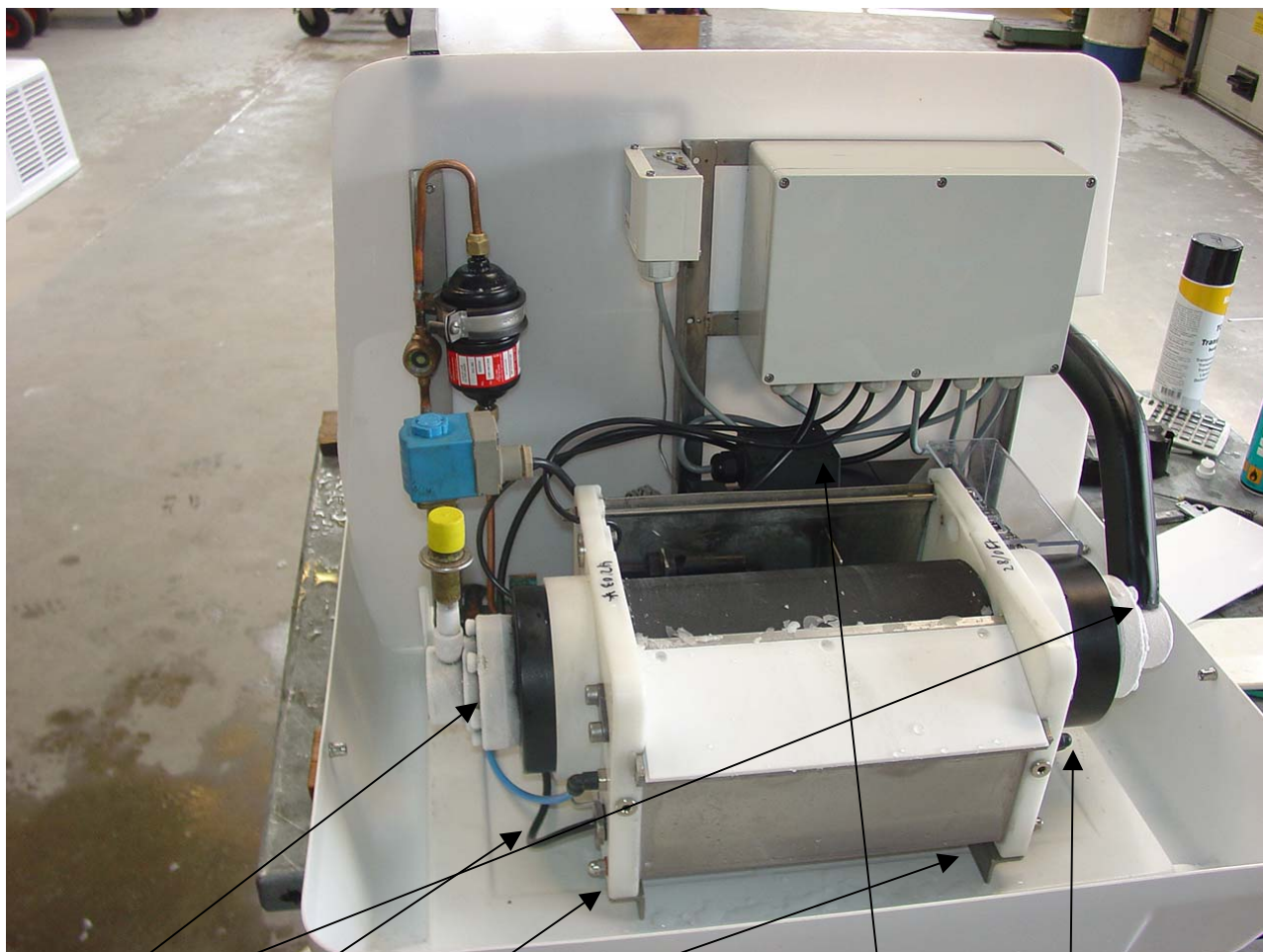


Change of basic machine, type SM.



1.

2.

3.

4.

2.

Release the pressure of the machine by running pump down.  
If any pressure of refrigerant is present you must take off this before opening.

Remove the flanges pos. 1, 8 bolts

Remove the heater and the water connections, eg. the salt dosing if mounted pos. 2

Remove the fixing of the machine to the frame, pos. 3, 4 pcs.

Remove the connections to the gearmotor pos. 4

The machine can now be removed when the frame.

Since the gear motor is larger than the existing one you may perhaps remove some of the frame to place the machine.

After mounting the system is evacuated, and the starting up can proceed.